

CPT GROUP JOINT STOCK COMPANY



CPT STEEL

PRE-ENGINEERED STEEL BUILDINGS



Joint Development - Joint Success

CONTENTS

01

Open letter
Introduction
Vision, mission, and core values
History
Key Differences

02

CPT STEEL products
Human Resources
Company profile
Production equipment
Labor safety

03

Customers and partners
Letter of assessment
Certificate of Quality
Implemented projects

Open letter

Dear Partners and Customers

CPT GROUP JSC would like to send to partners and customers the most respectful greetings

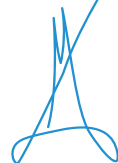
Along with the development and integration of the Vietnam's economy and larger region's, the industrial construction is also developing. Capital flows of domestic and foreign investors (FDI) are being continuously invested in Vietnam and the region

CPT STEEL, with 18 years of establishment and development, is a professional contractor in the field of steel structures and covering roofing sheets from the stages of "DESIGN, CONSULTATION, FABRICATION, and INSTALLATION. We have dedicated, responsible, dynamic, professional, and high-quality staff, who are always ready to devote for work and for green and sustainable development, and three plants with the capacity of 8,000 tons/month, which are applied with the quality management system ISO 9001: 2015, ISO 14001:2015, ISO 45001:2015. When carrying out projects, the criteria of SAFETY, QUALITY, SCHEDULE, OPTIMAL SOLUTION, AND COMPETITIVE PRICE are strictly maintained and observed.

The guiding principle in cooperation with partners and customers is being always APPRECIATED BY partners and customers. With years of experience in completing projects that have been highly appreciated and trusted by prestigious domestic and foreign partners and customers, a number of partners have signed strategic cooperation agreements with CPT STEEL.

CPT STEEL is looking forward to working with our partners and customers on suitable projects in order to bring the highest value to the parties and contribute to the green and sustainable development of the economy of Vietnam and the region. We our partners and customers growth and success!

Best regards,



Nguyen Manh Ha
Chairman of the Board



CPT GROUP JOINT STOCK COMPANY

We are one of the leading companies in the field of designing, manufacturing, and supplying pre-engineered steel buildings in Vietnam

With our method of supplying lump-sum services of Design, Fabrication, and Installation of steel structures in general, and pre-engineered steel buildings in particular, we have focused on resources from quality personnel to modern and closed production lines to confidently provide customers with the best solutions for projects to optimize investment costs and quality. Currently, CPT STEEL is able to meet all the demands of designing, manufacturing, and installing steel structures for workshops, warehouses, restaurants, and pre-engineered buildings.

The brand name CPT STEEL has been associated with hundreds of large and small projects in both size and value across the country, which have been recognized and appreciated by customers for the quality and services provided. CPT STEEL is currently a close and long-term partner of domestic and foreign customers.

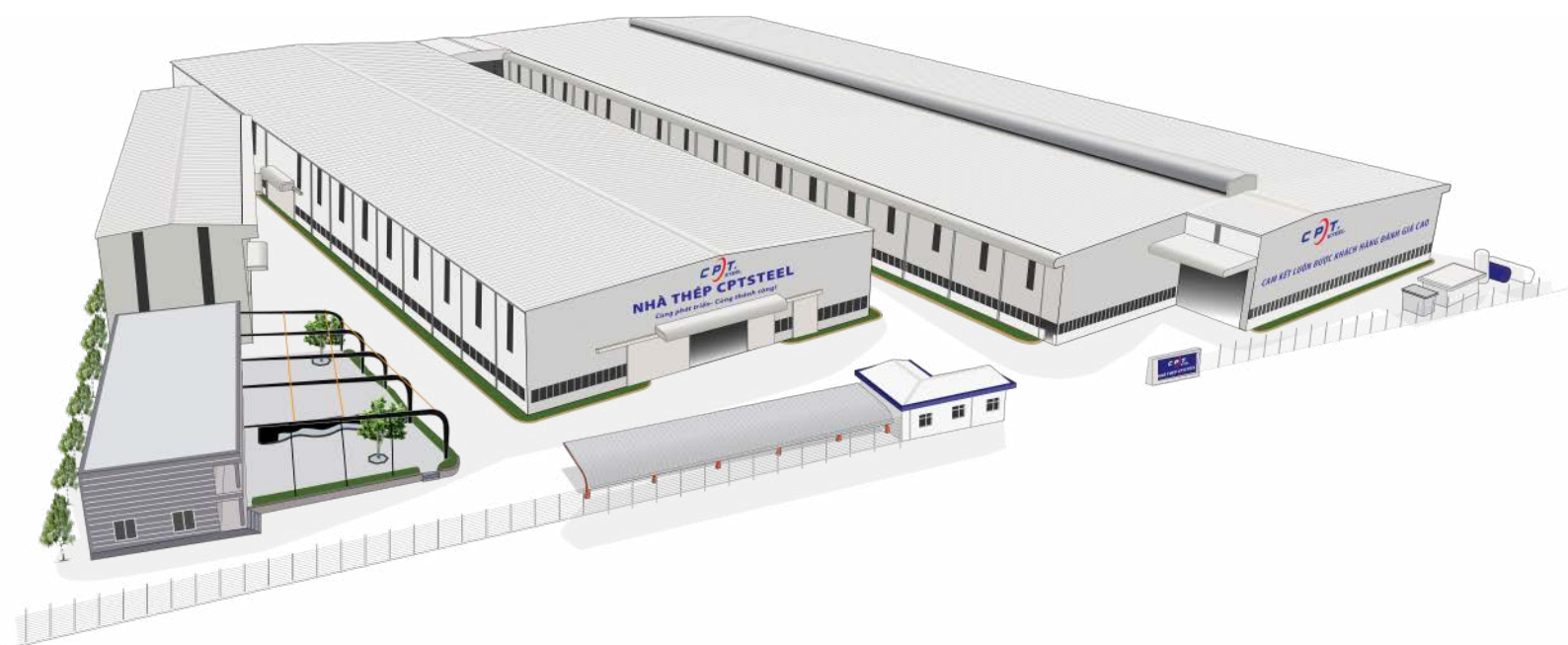
Focusing on quality to meet the strictest requirements of customers, CPT STEEL has applied the quality management system ISO 9001: 2015, ISO 14001:2015, ISO 45001:2015. so as to satisfy all the toughest investors from places/ countries such as Japan, Korea, Taiwan, Malaysia, Singapore, Hong Kong, The Czech Republic, and Vietnam,...

“Competitive price, good service quality, and guaranteed schedule” is our motto.

Company information

Vietnamese company's name:	CÔNG TY CỔ PHẦN CPT GROUP
Business type:	JOINT STOCK COMPANY
Transaction name in English:	CPT GROUP JOINT STOCK COMPANY
Abbreviated name:	CPT GROUP
Ha Noi Head office:	Kim Anh Building, No 1/78 Duy Tan Street, Ha Noi City
Ho Chi Minh Head office:	No 56 Yen The Street, Ho Chi Minh City
Factory No.1:	Hiep Hoa Industrial Cluster, Hiep Hoa District, Bac Giang Province
Factory No.2:	Thang Town, Hiep Hoa District, Bac Giang Province
Factory No.3:	Thanh Van Industrial Cluster, Hiep Hoa District, Bac Giang Province
Website:	www.cptsteel.com





Vision

By 2030, CPT STEEL aims to become the leading brand in Vietnam for manufacturing steel structures and pre-engineered steel buildings. We will also solidify our position as a top reliable export partner in the international market.

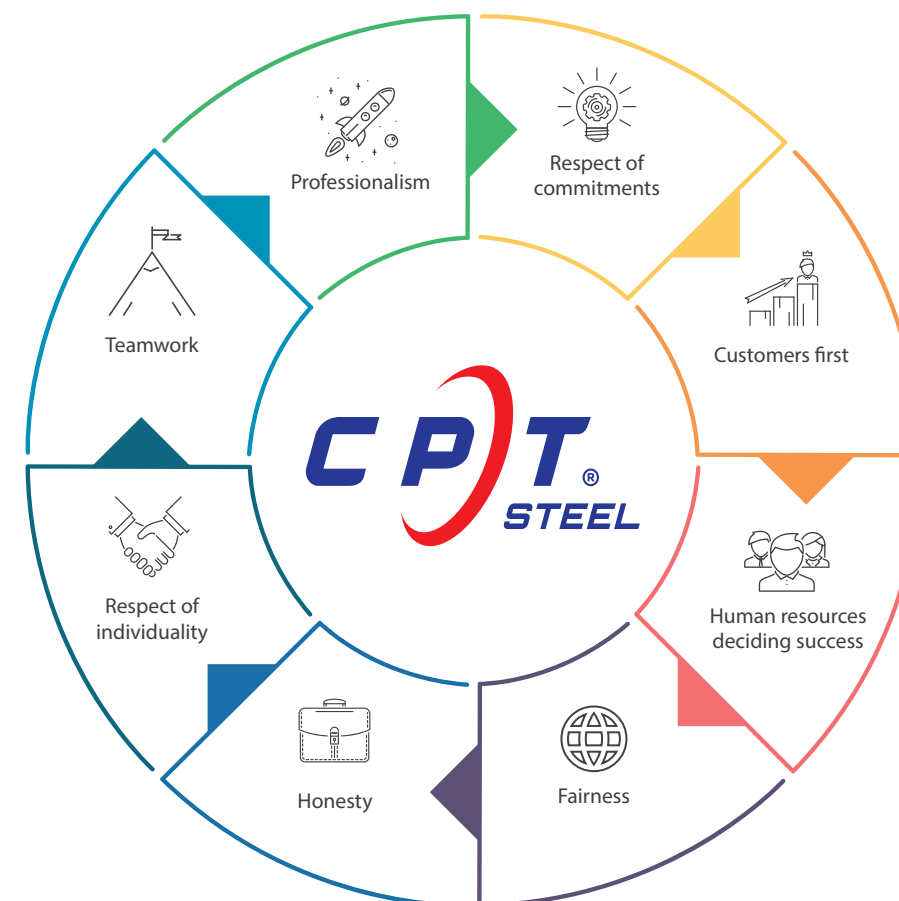
Mission

We provide high-quality steel structure and pre-engineered steel building solutions with optimized investment costs and guaranteed progress, thereby contributing to reducing emissions and protecting the environment throughout the project lifecycle.

We put customers at the center, aiming to become the leading trusted choice for quality and service. Concurrently, we build a safe, friendly, and development-rich working environment for every employee, contributing to enhancing community welfare.

We strictly adhere to professional business ethics, delivering sustainable value to shareholders, partners, and society.

Core values



Professionalism

The team of highly qualified staff have a professional and dedicated manners & behavior to ensure the success of the CPT STEEL brand.

Respect of commitments

CPT STEEL has always seriously implemented its commitments, including internal commitments and commitments to customers

Customers first

Customer satisfaction is the goal for all our activities

Respect of individuality

Employees have always been given the maximum opportunities to promote their capacity, develop themselves, and succeed with the company. They have always been listened to and advised by their colleagues regardless of their positions. They dare to speak straight and share their thoughts and views in the spirit of mutual respect, fairness and equality in every situation

Fairness

CPT STEEL has always treated employees, customers, suppliers, and stakeholders fairly.

Honesty

CPT STEEL has always emphasized honesty in relationships and transactions with customers and suppliers

Human resources deciding success

Human resources are the central development element affecting success or failure. Therefore, CPT STEEL has always focused on investing in training and development of human resources.

Teamwork

There are common beliefs and goals for the development of the company without jealousy, malice, detestation, and factions. People help, support, show concern, and treat each other like brothers

HISTORY

2007

Establishment of CPT Vietnam Mechanical Construction JSC; Completion and commencement of the steel structure factory with a capacity of 300 tons/month.

2010

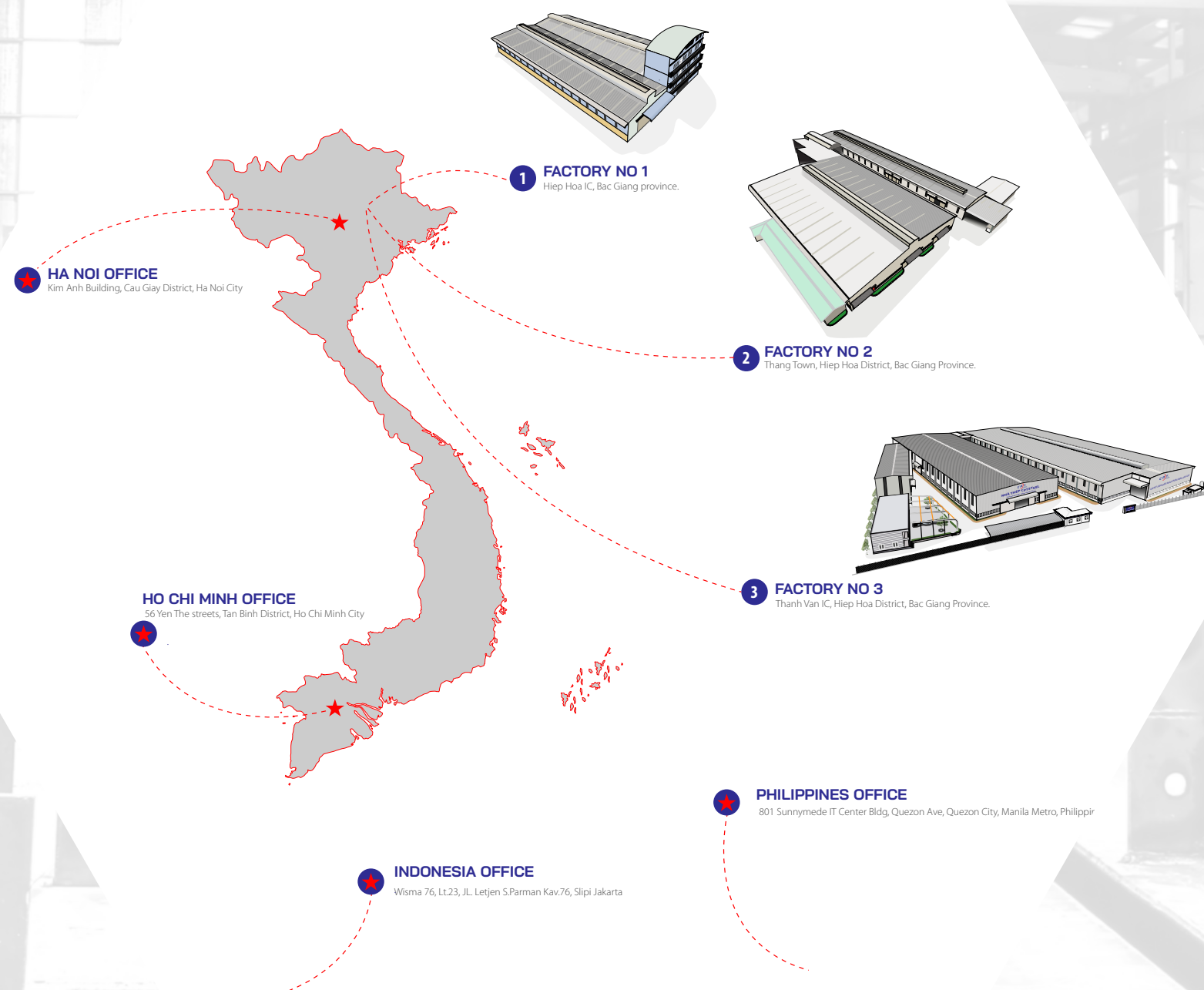
Expansion of the working office and investment in upgrading the production line of the factory, raising the capacity to 500 tons / month.

2012

Official opening of the company's representative office in Hanoi

2015

Adoption of the investment policy to build the factory to meet the increasing demand of the market; construction of factory No.2 was officially commenced on an area of 3.5 hectares in November



2016

Completion and commencement of the steel structure factory No. 02 with a comprehensively modern and highly automatic production line.
Workshop area: 20,000 m²
Capacity: 1,300 tons/month
Total investment: VND 80 billion

2021

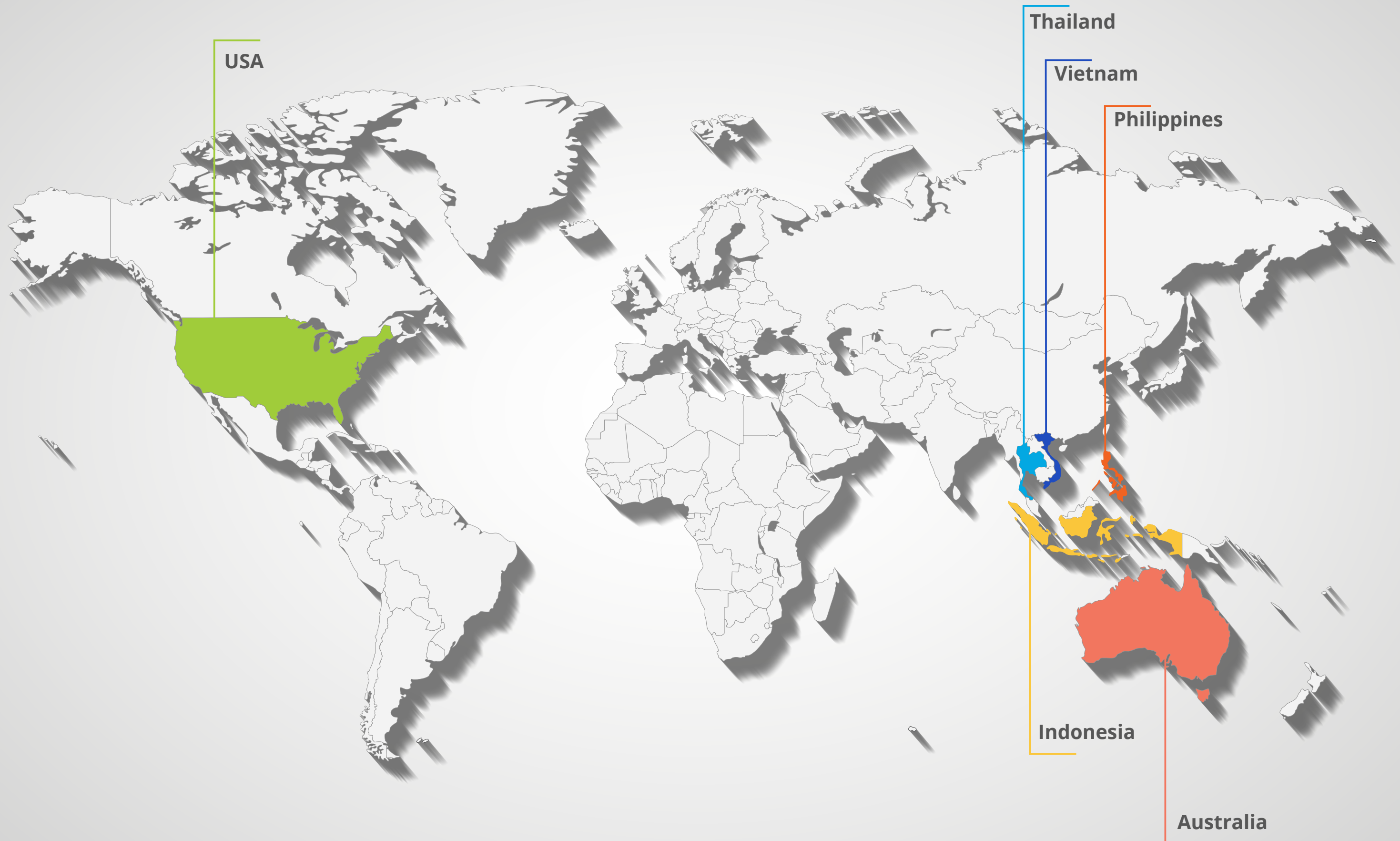
Official opening of the company's representative office in Ho Chi Minh City and Over Sea office in Philippines and Indonesia, increase export ratio.

2022

Completion and commencement of the steel structure factory No. 03. total capitor CPTSTEEL a 8.000 tons/ month.
Conversion of CPT Vietnam Mechanical Construction JSC to CPT Group JSC.

...

Our projects have been implemented in several countries







We recognize that investing in self-development and human development can bring about sustainable values in the long run. With a solid orientation and accumulated and constantly improved production line system and production technology, we have equipped our staff with a solid knowledge base, keen occupational thinking, and a spirit of non-stop practice, application, and self-development right down to the smallest daily task to reach the goal of making the biggest difference from the factory to the site, making the most cost-effective, high-quality products for our customers



DESIGN

All creative and coordination efforts in design and consultation are to provide the best solutions. With a creative, experienced, and dedicated team of designers, CPT STEEL is proud to bring hundreds of customers the optimal designs in the field of pre-engineered steel buildings



MANUFACTURING

With a modern production line and experienced, skilled, and well-trained stars, CPT STEEL will always bring high-quality products to customers



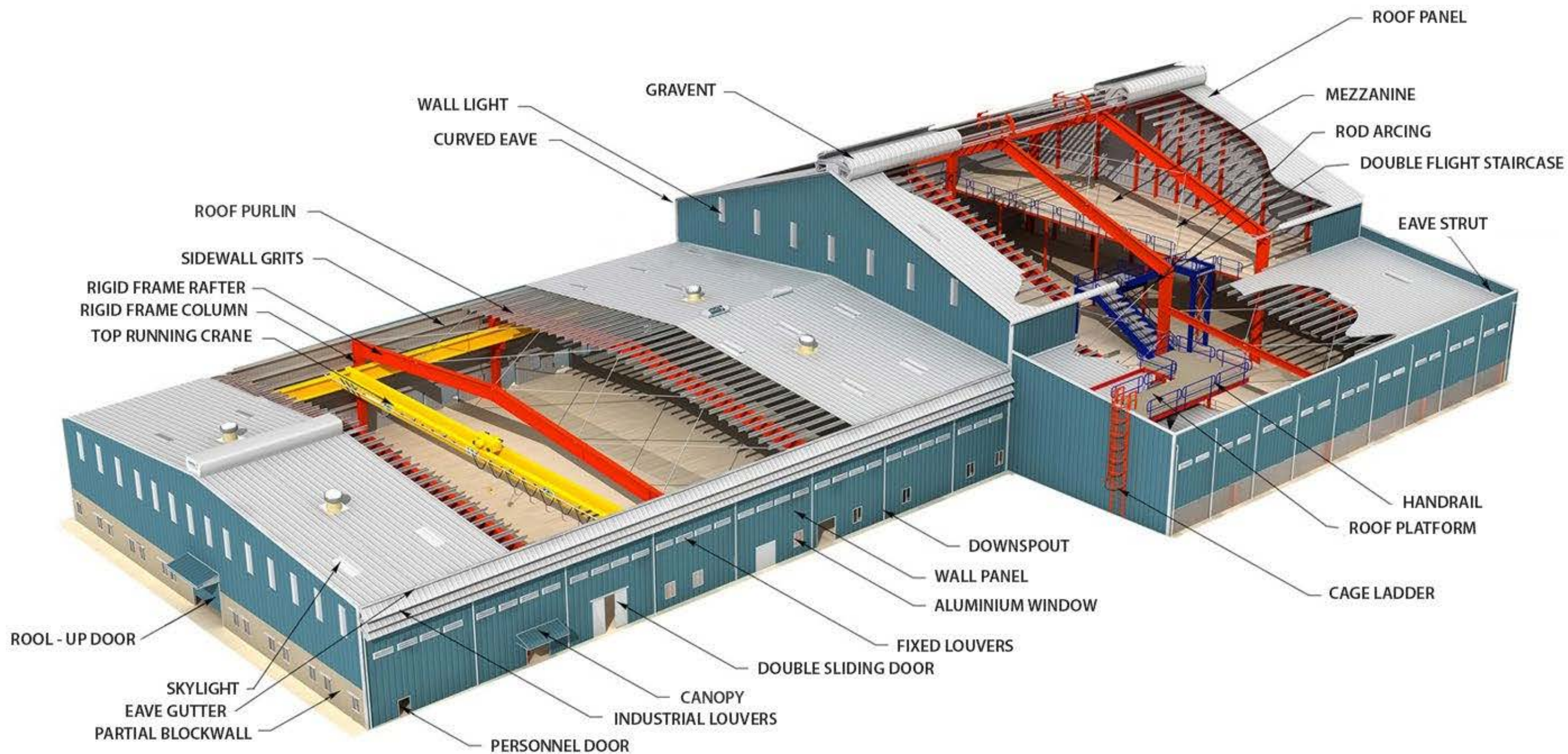
CONSTRUCTION

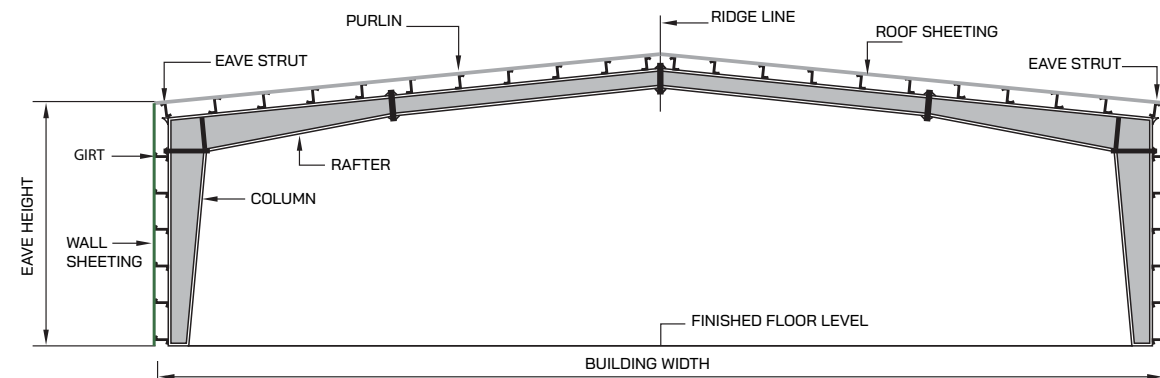
Labour safety is always a priority of CPT STEEL. The Company engineers and erection workers have been regularly trained in the field of labour safety



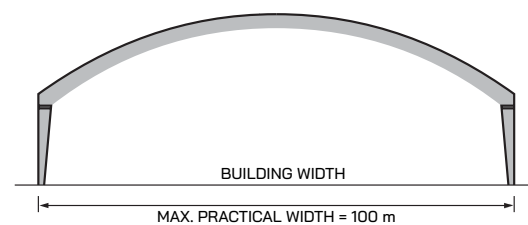
WARRANTY SERVICES.

Not only does the warranty service help minimize risks and incidents, but it also enhances the value and trust of the construction project. CPT STEEL is committed to quality and professional services. The warranty service plays a crucial role in building long-term relationships and fostering trust with our customers.

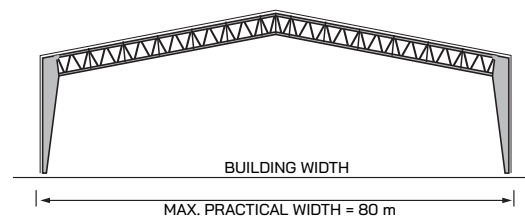




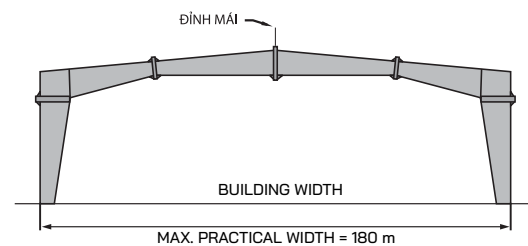
Typical Cross Section



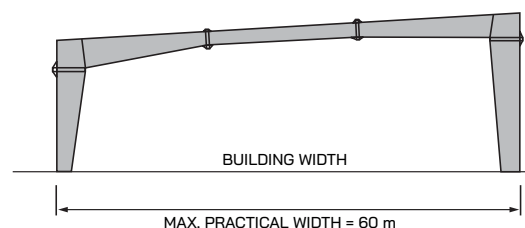
Built-up Curved Rafter (BU)



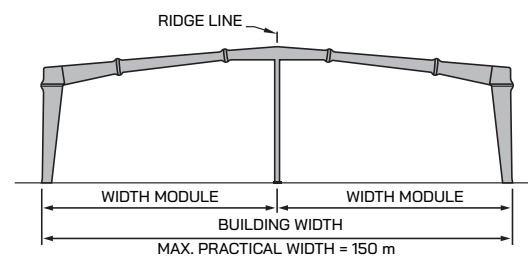
Hybrid



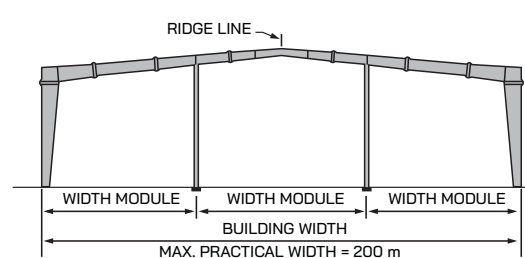
Clear Span (CS)



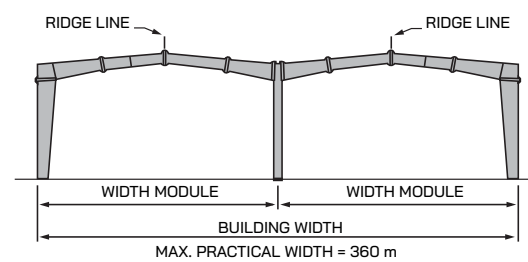
Single Slope (SS)



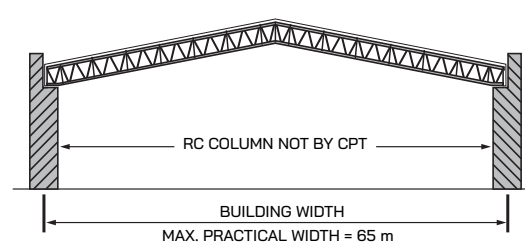
Multi-Span "1" (MS-1)



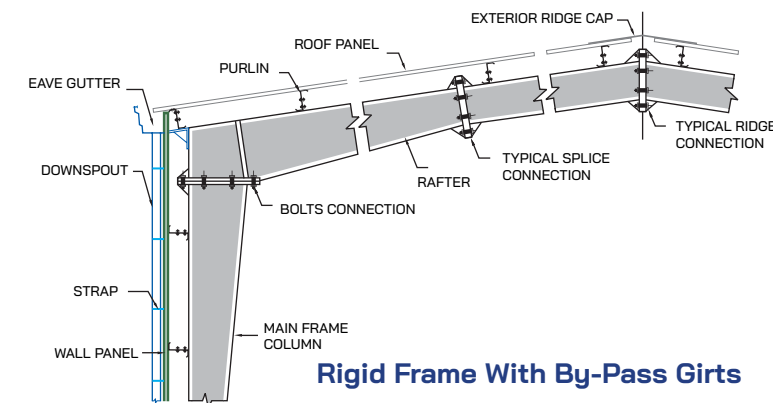
Multi-Span "2" (MS-2)



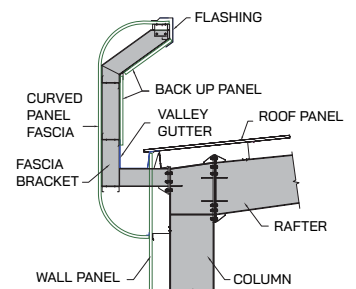
Multi-Gable (MG)



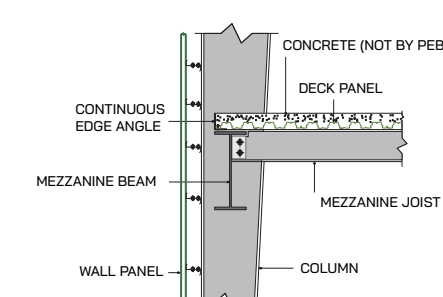
Roof System (RS)



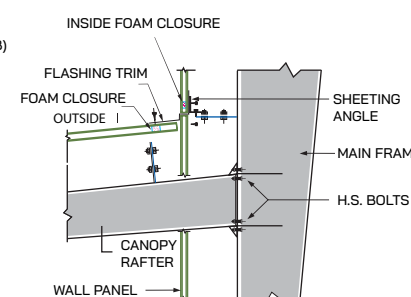
Rigid Frame With By-Pass Girts



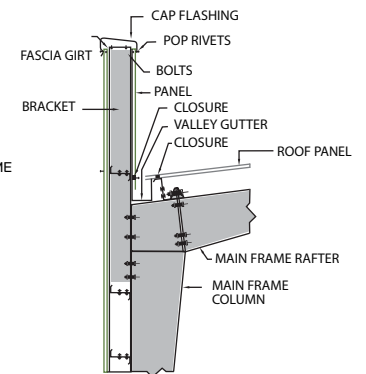
Curved Fascia



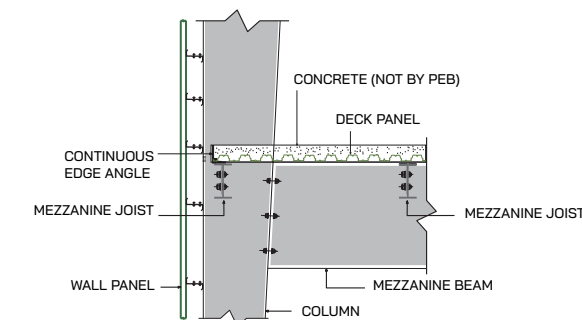
Mezzanine Joist Connection to Mezzanine Beam



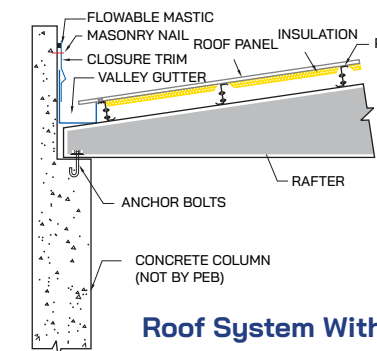
Canopy



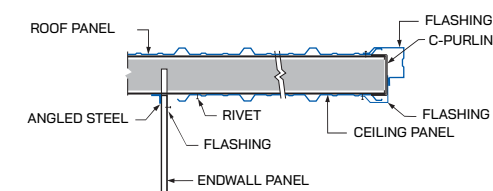
Parapet Fascia



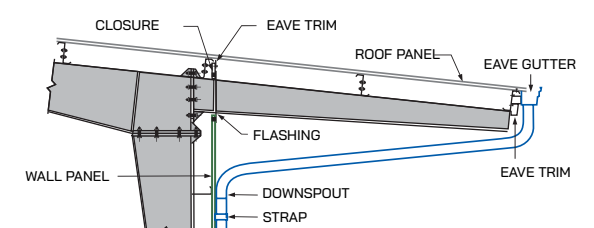
Mezzanine Beam Connection to Main Frame Column



Roof System With Insulation



Endwall Roof Extension With Soffit



Sidewall Roof Extension

CPT STEEL Pre-Engineered Steel Buildings - The best solution for your project. If a project needs cost savings, quick installation, and absolute and sustainable quality control, CPT STEEL pre-engineered steel buildings are the best choice. Pre-Engineered Steel Buildings are the latest construction trend in the world. Pre-engineered steel buildings are increasingly asserting outstanding advantages in the field of industrial and civil construction such as factories, warehouses, high-rise buildings, showrooms, heavy industry, or infrastructure ...

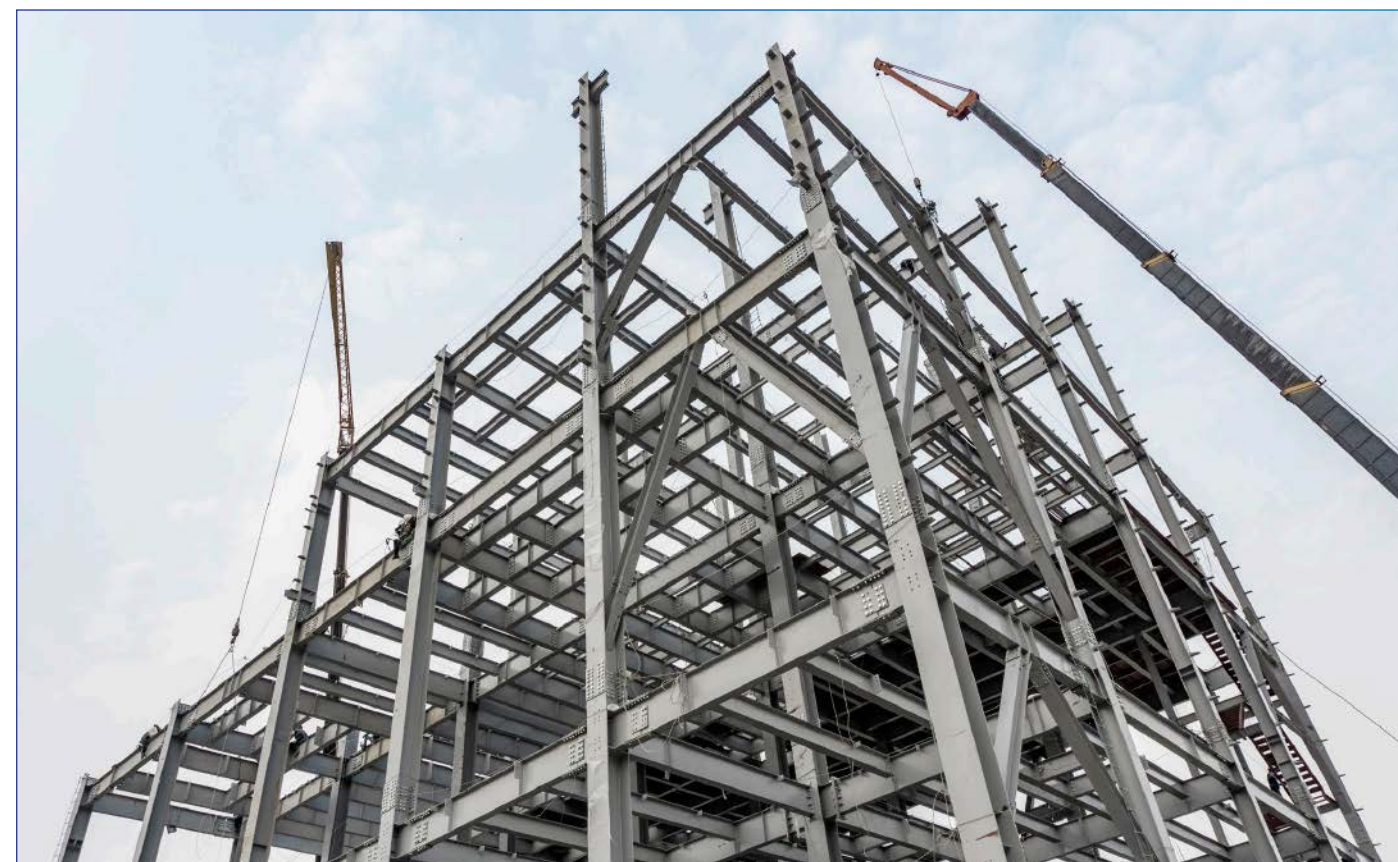
High-rise structure



Workshop structure



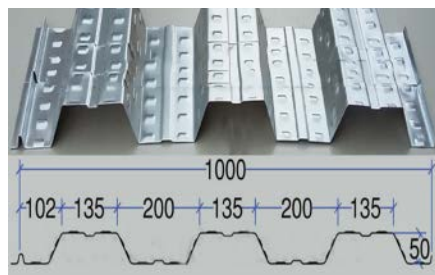
High tower structure



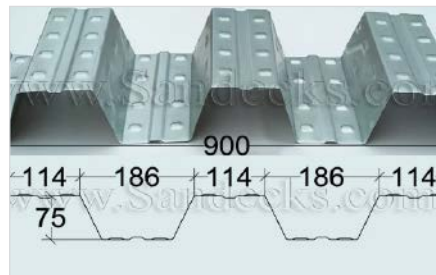
Pipe Rack System



Decking



Decking H =50



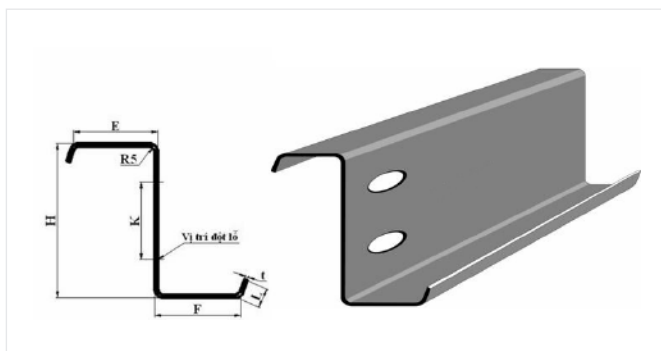
Decking H =75



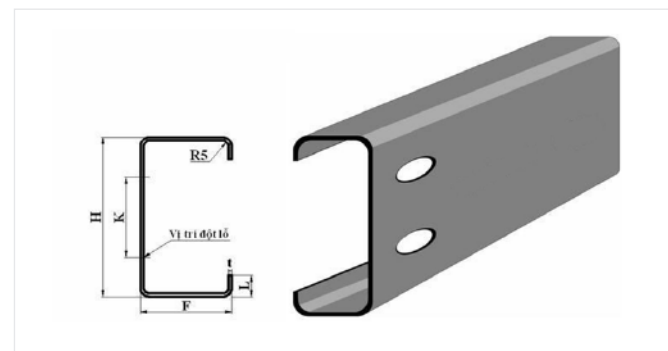
Speed Decking

Purlin

CPT STEEL supplies purlins from normal strength to high strength with galvanization Z80 - Z275



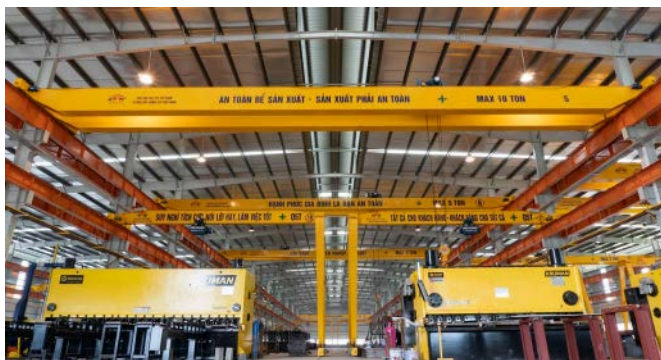
Z Purlin



C Purlin

Overhead Crane

CPT STEEL is currently developing and supplying various types of overhead cranes



crane modul



crane quality check

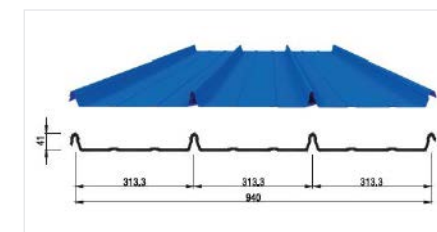
THERMAL INSULATION COVERING MATERIALS

Currently, CPT STEEL provides a full range of solutions for covering materials to industrial factories

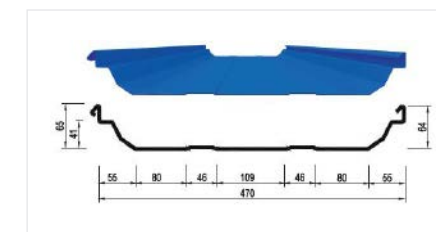
Steel panel



05 (06) ribs Steel Panel

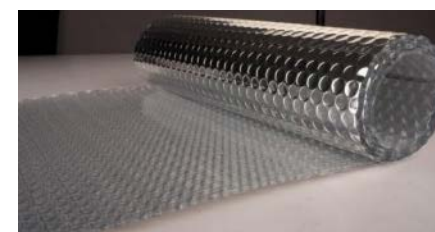


Kliplock Steel Panel



Seamlok Steel Panel

Insulating materials



Air-bag insulation

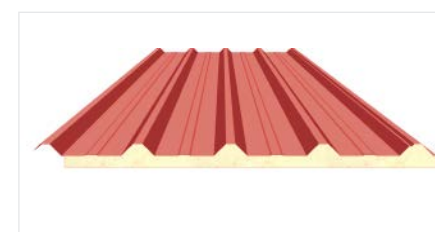


Glass wool insulation

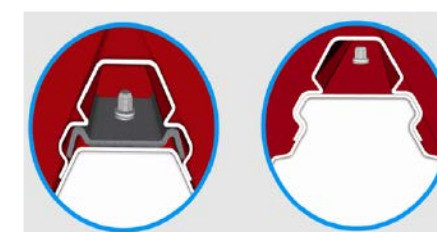


Rockwool

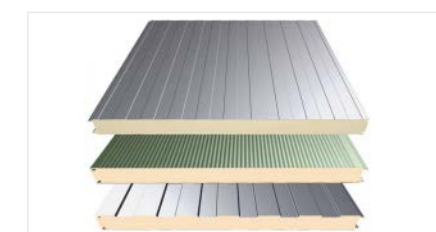
Insulation panel



EPS/PU Sandwich panel - 3 layers



Screw cap for roof panel



Sandwich panel

Supplier partner

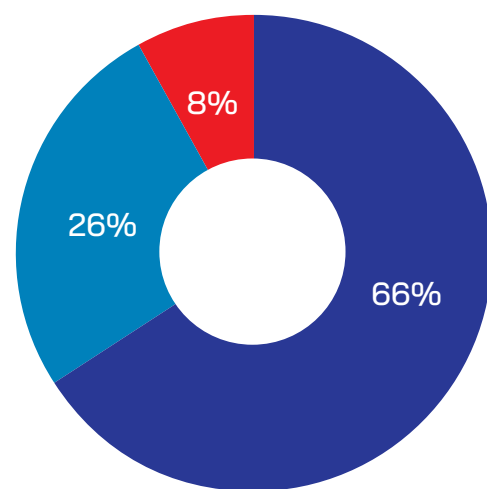




People are the core and decisive element in all CPT STEEL's activities. Therefore, at CPT STEEL, we are determined to build a team of experienced, qualified workers who always have the spirit of the highest responsibility and professionalism

In the process of formation and development, despite many difficulties and challenges, CPT STEEL, as a family, constantly researches techniques and improves skills and production capacity towards the goal of becoming one of the strongest enterprises in the domestic and international markets.

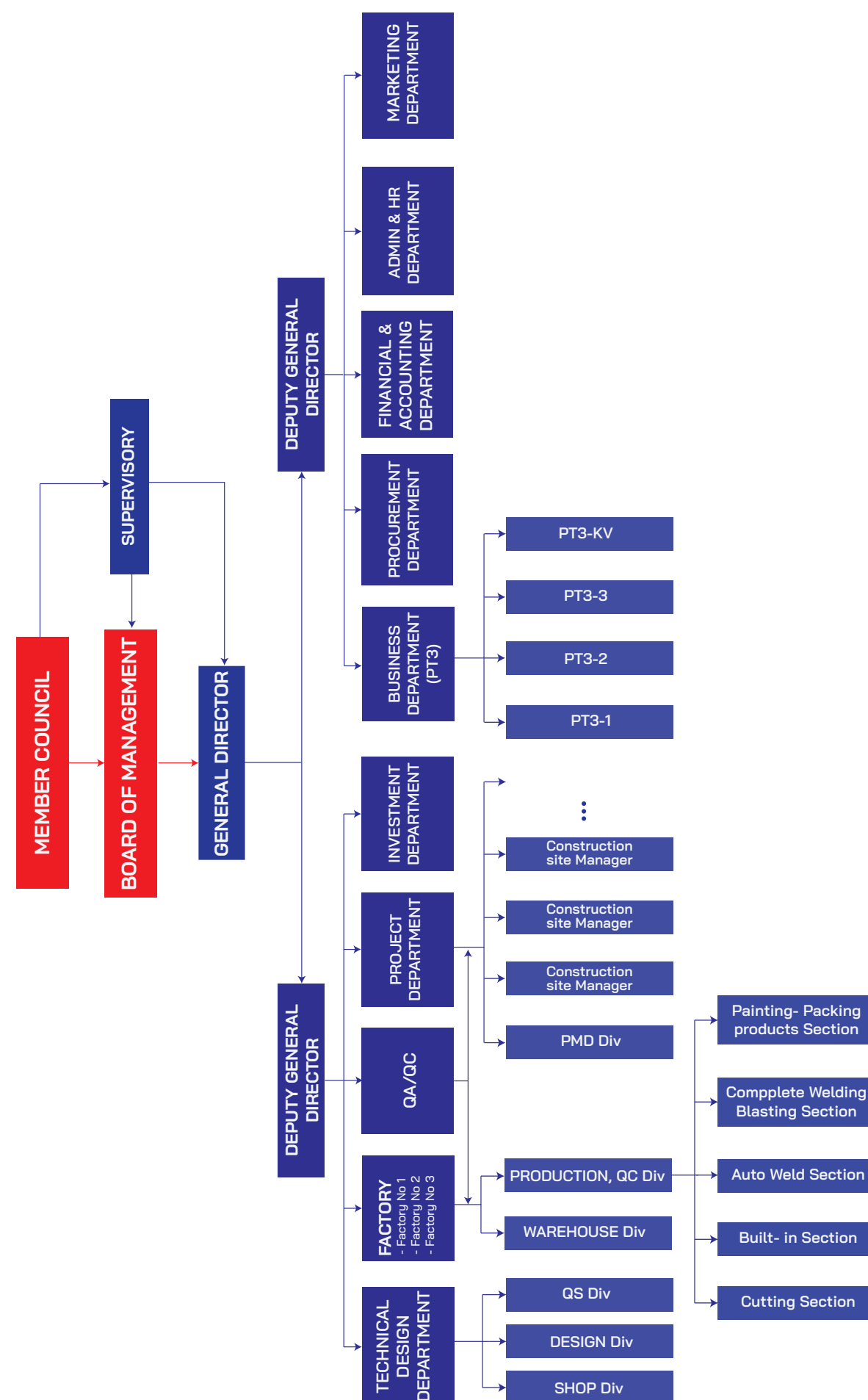
Human resources diagram



Classification:

- Leaders and Managers: 8 %
- Engineers: 26 %
- Workers : 66 %

Organizational chart



CPT STEEL HAS THREE FACTORIES WITH TOTAL AREA OF OVER 7 HA. THE TOTAL PRODUCTIVITY OF THE FACTORIES IS UP TO 8,000 TONS/MONTH. THE FACTORIES HAVE MORE THAN 500 EXPERIENCED, QUALIFIED, AND WELL-TRAINED EMPLOYEES.





FACTORY NO 1

- Construction area: 10.000 m²
- Capacity: 1.200 tons/month.



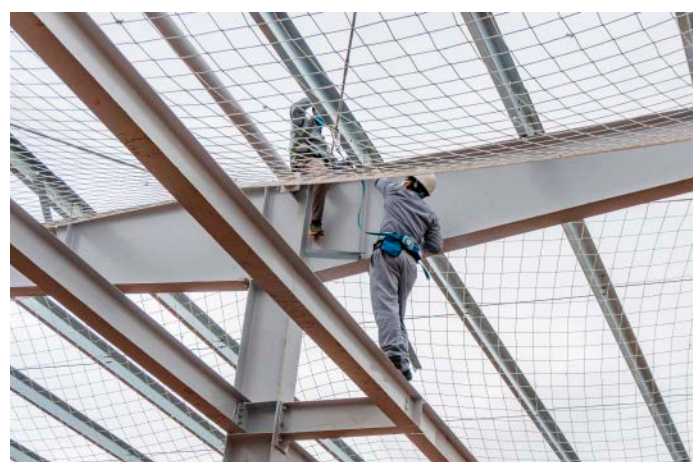
FACTORY NO 2

- Construction area: 35.000 m²
- Capacity: 2.600 tons/month.



FACTORY NO 3

- Construction area: 30.000 m²
- Capacity: 4.200 tons/month.



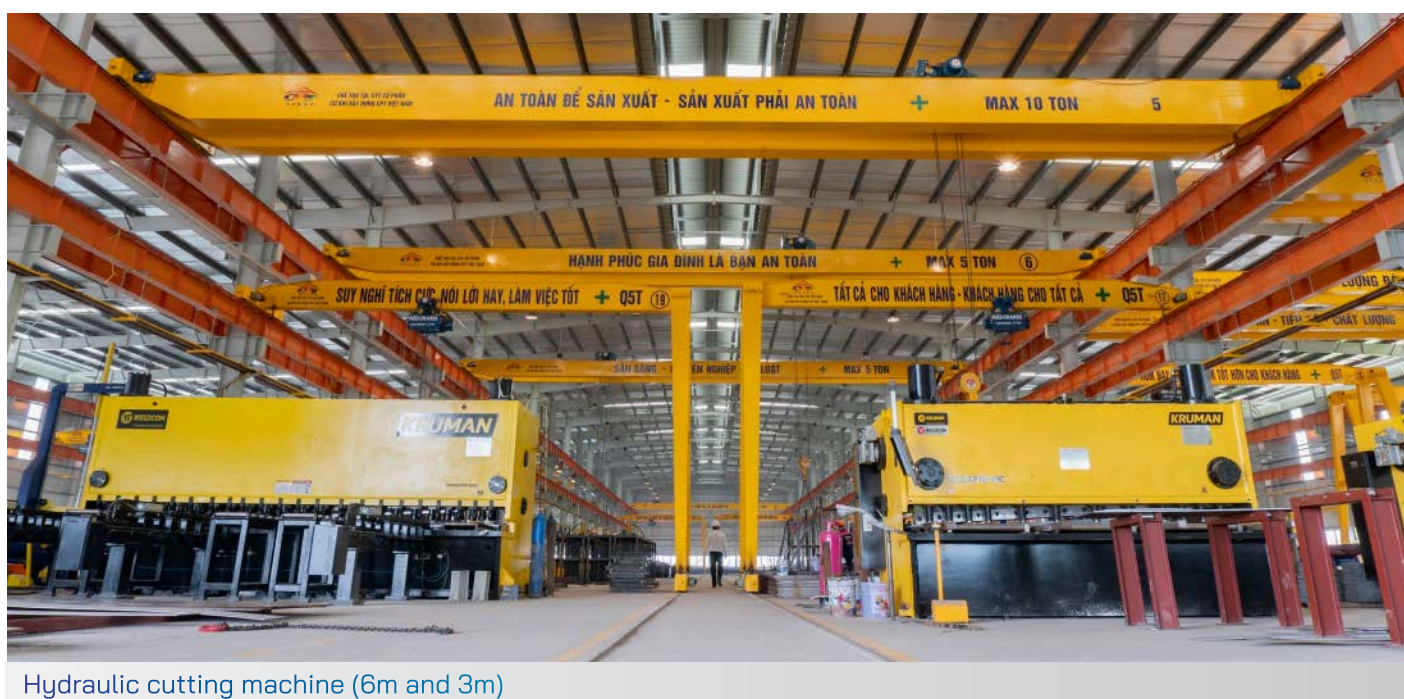
At CPT STEEL, equipment is always modernized. Products manufactured by modern and closed production lines from the processing of raw materials to finished products are processed by an imported machine system with high-precision and high-capacity.



Laser cut machine



Cutting machine



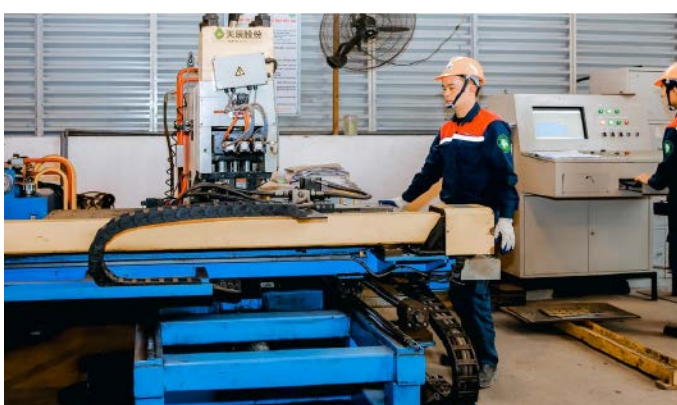
Hydraulic cutting machine (6m and 3m)



Automatic welding machine



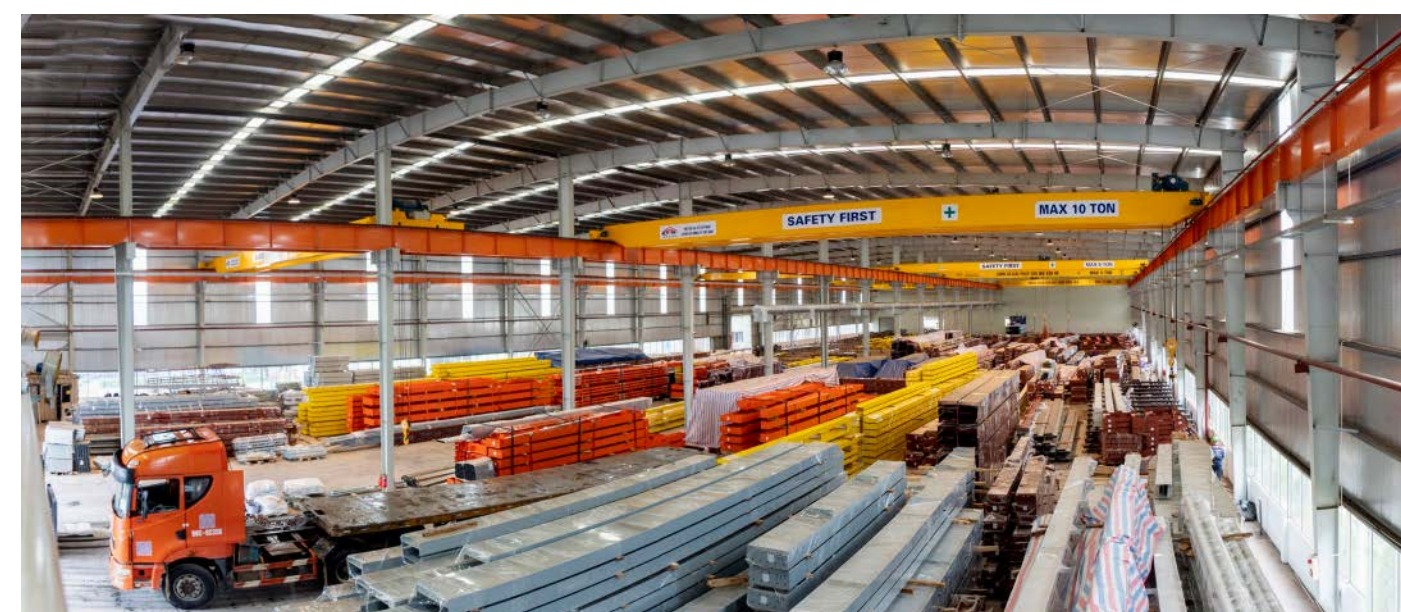
Straightening machine



CNC hydraulic punching machine



Hydraulic cutting machine (2m)

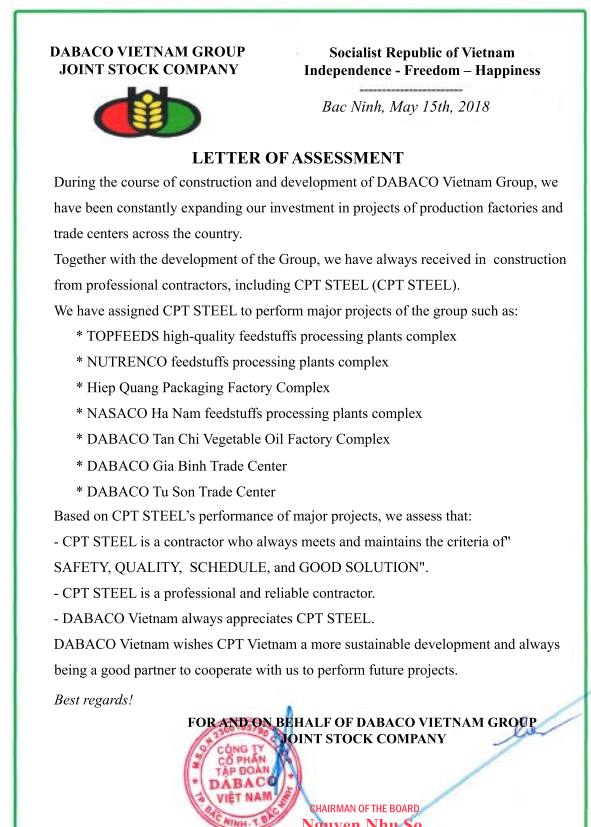
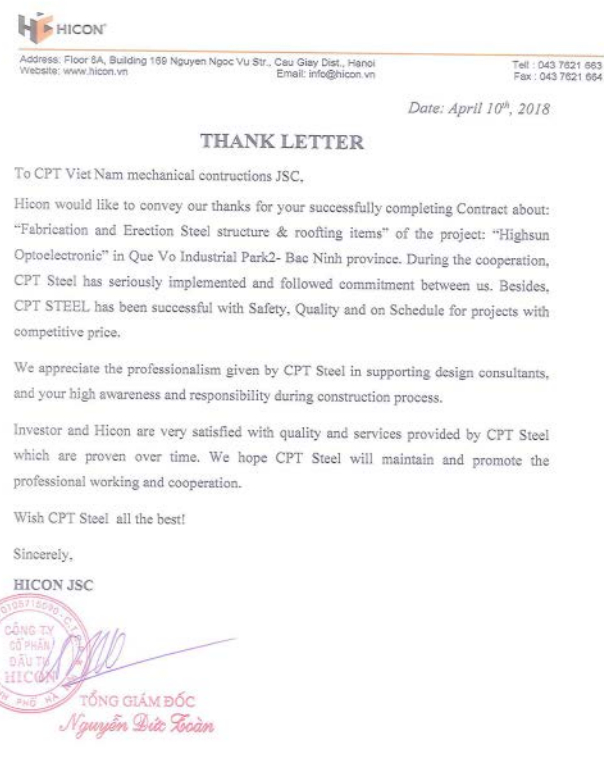
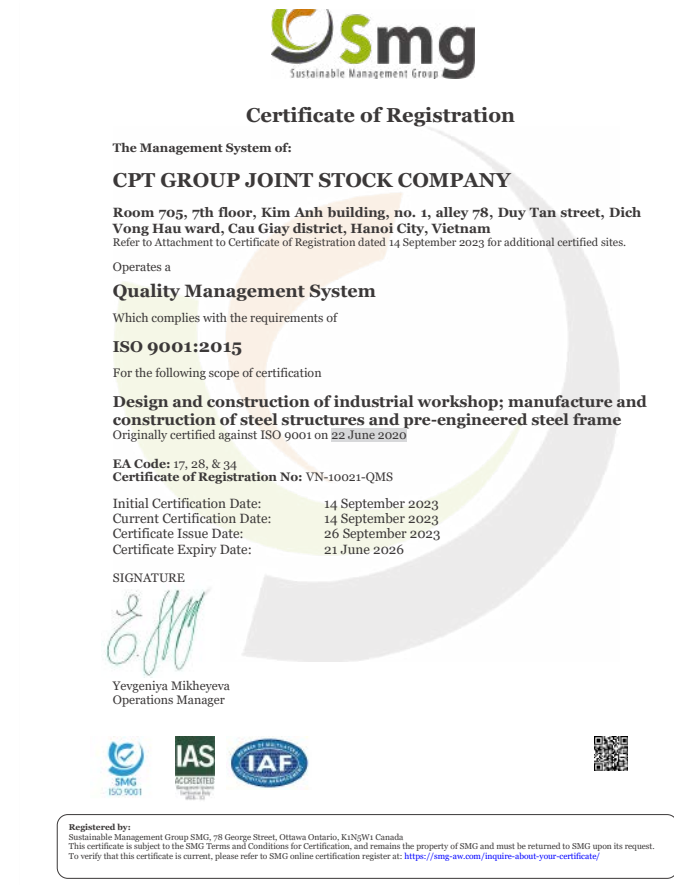
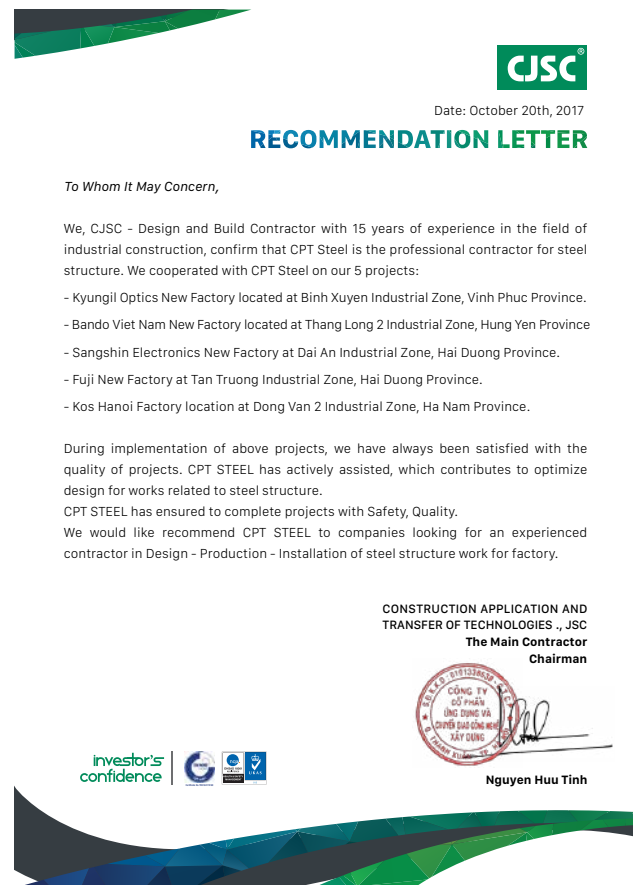


Painting work shop



Over the past nearly 20 years of operation with a team of highly qualified and experienced professionals, modern production equipment, and advanced software development system, our quality commitment has been proven with pre-engineered steel buildings co-constructed by CPT STEEL. Each project has been tailored to meet the specific needs of our customers, which affirms our commitment to excellent quality. Our Core Values, including Integrity, Honesty, and Quality, have confirmed that CPT STEEL will always bring "satisfaction in cooperation"

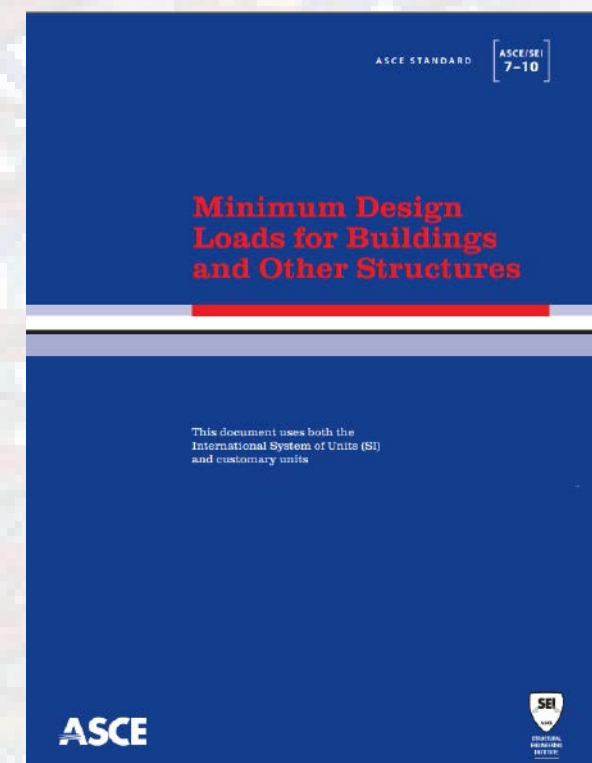
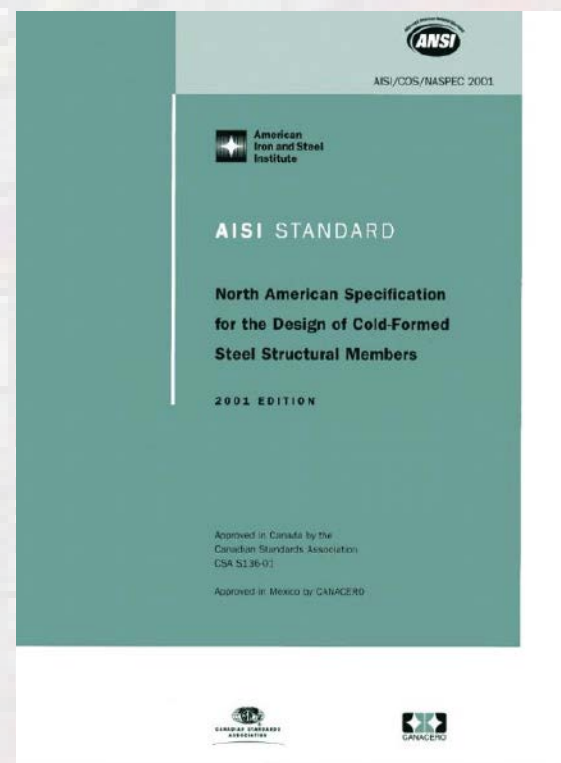
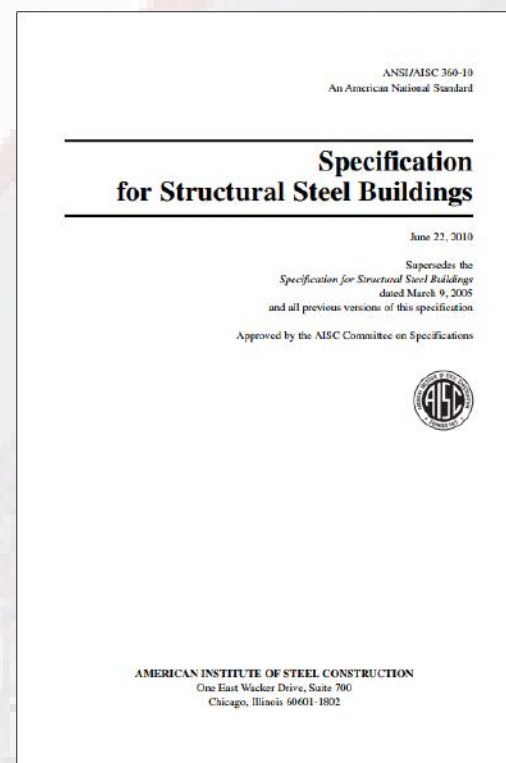
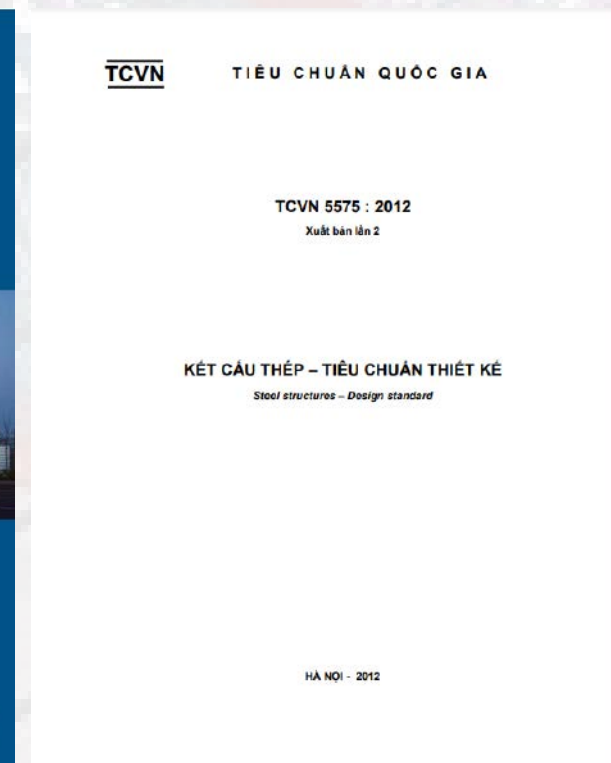
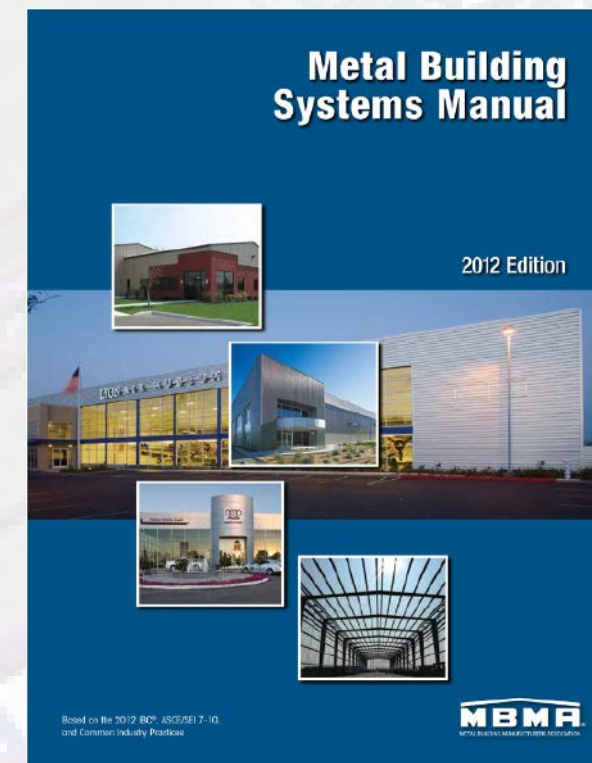




CPT operates according to the ISO standard system:

- Quality Management System: ISO 9001:2015
- Environmental Management System: ISO 14001:2015
- Occupational Health & Safety Management System: ISO 45001:2018

Software certification and Local Code, Vietnam Code, US code,





JINKO SOLAR (VIETNAM) INDUSTRIES CO.,LTD

Owner: JINKO SOLAR (VIETNAM) INDUSTRIES CO.,LTD
 Location: Amata IZ, Quang Ninh Province.
 Project scale:

- PEB: 10.000 tons
- Roof panel and cladding: 100.000 m2
- Decking: 60.000 m2



ELECTRONICS PROJECTS



FUKANG TECHNOLOGY FACTORY

Owner: Foxconn Singapore PTE Ltd.
Location: Quang Chau IZ, Bac Giang Province.



**GOERTEK PRECISION
INDUSTRY VINA FACTORY**

Owner: GOERTEK PRECISION INDUSTRY VIETNAM CO., LT-
Location: DWHA IZ 1, Nghe An Province.



**WIN BILLION VIET NAM
FACTORY**

Owner: WIN BILLION VIETNAM TECHNOLOGY COMPANY LIMITED
Location: Song Cong II IZ, Thai Nguyen Province.



**LUXSHARE - ICT(NGHE AN)
FACTORY**

Owner: LUXSHARE - ICT (NGHE AN) LIMITEDV-
Location: SIP IZ, Nghe An Province.
Project scale: 50.000 m2



FOXCONN M11

Owner: FUHONG PRECISION COMPONENT
(BAC GIANG) COMPANY LIMITED
Location: Quang Chau IZ, Bac Giang Province.
Project scale: 23.782 m2 - 1.000 tons PEB



LUXSHARE-ICT (VIET NAM) FACTORY

Owner: LUXSHARE - ICT (VIETNAM) LIMITED
Location: Quang Chau IZ, Bac Giang Province.
Project scale: 50.000 m2



FOXCONN F16

Owner: FUHONG PRECISION COMPONENT
(BAC GIANG) COMPANY LIMITED
Location: Quang Chau IZ, Bac Giang Province.
Project scale: 24.806 m2

MANUFACTURING, ASSEMBLY AUTOMOBILE PROJECTS



THANH CONG VIET HUNG AUTOMOBILE & AUXILIARY INDUSTRIAL COMPLEX FACTORY

Owner: THANH CONG VIET HUNG TECHNOLOGY INDUSTRIAL COMPLEX SJC.
Location: Viet Hung IZ, Quang Ninh Province.
Project scale: 4.500 tons.



BYD (VIET NAM) FACTORY

Owner: BYD ELECTRONICS (VIETNAM) COMPANY LIMITED
Location: Phu Ha IZ, Phu Tho Province.
Project scale: 210.383 m2



VIET NHAT MOTORS FACTORY

Owner: VIET NHAT MOTORS JOINT STOCK COMPANY
Location: Van Giang District, Hung Yen Province.
Project scale: 67.000 m2

PACKAGING, GARMENT PROJECTS



MYS PACKAGING FACTORY

Owner: MYS Group (Viet Nam) Packaging Technology Co.,Ltd
Location: Dong Van IV IZ, Ha Nam Province.
Project scale: 650 tons



HAIVINA HONG LINH FACTORY

Owner: Haivina Hong Linh Co.,Ltd
Location: Nam Hong IZ, Ha Tinh province.
Project scale: 25.000 m2



DRAGON TEXTILES 2 FACTORY

Owner: Thang Long Investment Exportimport JSC
Location: Quynh Phu District, Thai Binh province.
Project scale: 9.500 m2 - 521 tons



DENIM TEXTILE FACTORY

Owner: TCE VINA DENIM JSC
Location: Hoa Xa IZ, Nam Dinh Province
Project scale: 9.106 m2

PRECISION PROJECTS



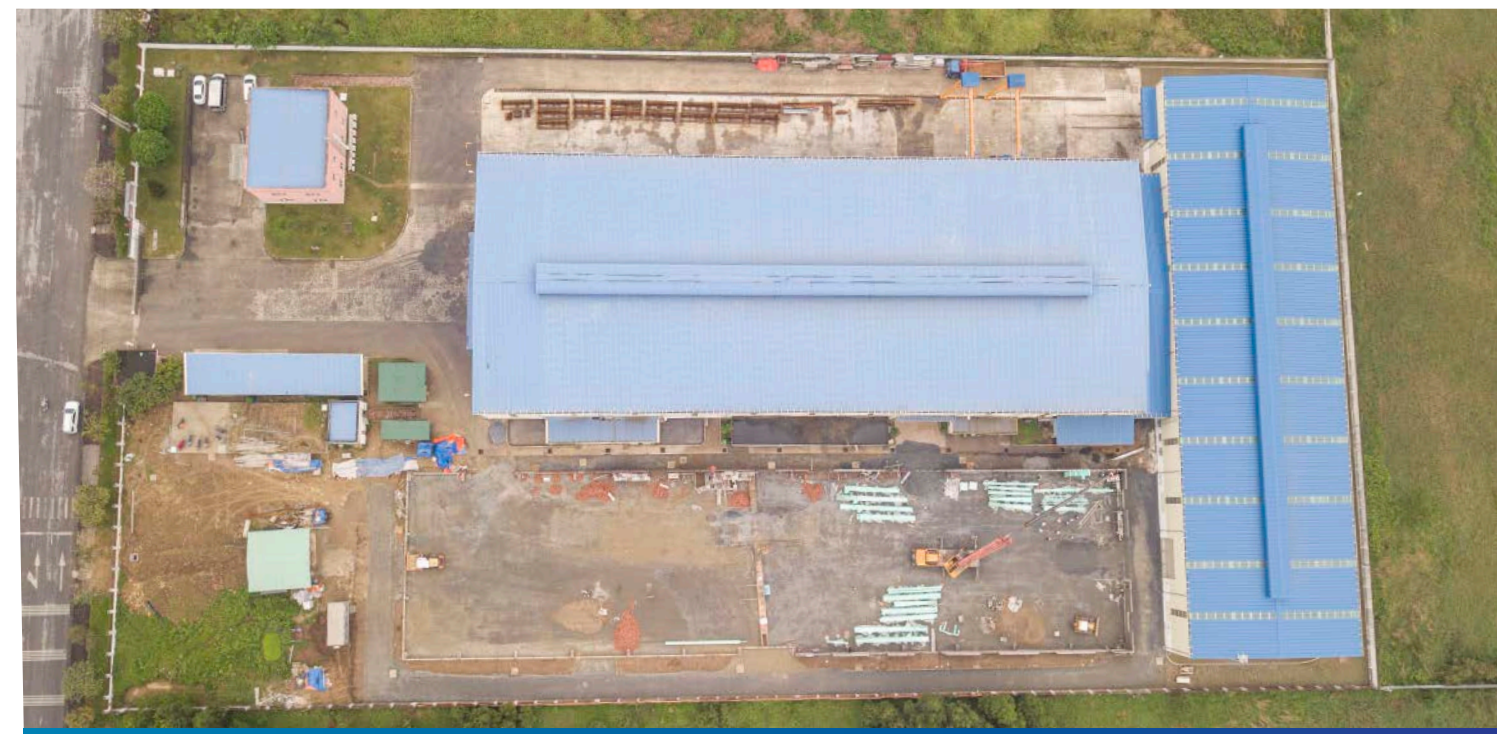
VPIC1 FACTORY

Owner: VIET NAM PRECISION INDUSTRIAL NO.1 CO.,LTD
Location: Ba Thien 2 IZ, Vinh Phuc Province.
Project scale: 155.266 m2



LINH GIANG FACTORY

Owner: LINH GIANG PRECISION ACCESSORIES INDUSTRY COMPANY LIMITED KCN
Location: Dong Van I IZ, Ha Nam Province.



SOLTECT 1 FACTORY

Owner: SOLTEC VIETNAM COMPANY
Location: Dong Van II IZ, Ha Nam Province.
Project scale: 6.000 m2



HUY HOANG LOCK FACTORY

Owner: HUY HOANG LOCKS COMPANY LIMITED
Location: Quang Minh IZ, Ha Noi City.
Project scale: 10.000 m2

WARE HOUSE, LOGISTICS PROJECTS



BWID HAI PHONG

Owner: BW Industrial Development Hai Phong one member limited Company
Location: Nam Dinh Vu IZ, Hai Phong Province.
Project scale: 60.000 m2



BWID HAI DUONG

Owner: BW Industrial Development Hai Duong one member limited Company
Location: VSIP IZ, Hai Duong Province.
Project scale: 40.000 m2



SEMCORP NGHE AN

Owner: Sembcorp Industries (Singapore) Group.
Location: VSIP Nghe An IZ, Nghe An Province.
Project scale: 30.000 m2



SEMCORP QUANG NGAI

Owner: Sembcorp Industries (Singapore) Group.
Location: SVIP Quang Ngai IZ, Quang Ngai Province.
Project scale: 35.500 m2

SHOPPING MALL PROJECTS



**LIVING WORLD
KOTA WISATA**

Owner: PT Sahabat Kota Wisata
Location: Cibubur - Jakarta
Project scale: 19.716 m2



LONG BIEN SUPERMARKET

Owner: Coma 25 Contruction and Tradding JSC
Location: Quận Long Biên, Hà Nội
Project scale: 500 tons PEB + 6.000 m2 Decking



**GO THAI BINH
SHOPPING MALL**

Owner: Central Retail Group.
Location: Thai Binh City, Thai Binh Province.
Project scale: 21.000 m2



**DABACO DEN DO
SHOPPING MALL**

Owner: Dabaco Viet Nam Group.
Location: Tu Son District, Bac Ninh Province.
Project scale: 20.000 m2

FOODSTUFF, ANIMAL FOOD PROJECTS



**DOVECO SON LA FOODSTUFF
EXPORT FACTORY**

Owner: Dong Giao Foodstuff Export JSC
Location: Mai Son District, Son La Province.
Project scale: 500 tons



**DABACO TAN CHI
FACTORY**

Owner: Dabaco Viet Nam Group.
Location: Tien Du District, Bac Ninh Province.
Project scale:



**HAI LONG BINH DINH
ANIMAL FEED FACTORY**

Owner: HaiD Group
Location: Hoa Hoi IZ, Binh Dinh Province.
Project scale: 60.000 m2

OTHER PROJECTS



VIETNAM NATIONAL INNOVATION CENTER

Owner: Vietnam National Innovation Center
 Location: Hoa Lac IZ, Ha Noi City.
 Project scale: 34.000 m²



TH TRUE MILK THANH HOA

Owner: YENMY MILK FOOD CO.,LTD
 Location: Nong Cong District, Thanh Hoa Province.
 Project scale: 1.300.000 m²





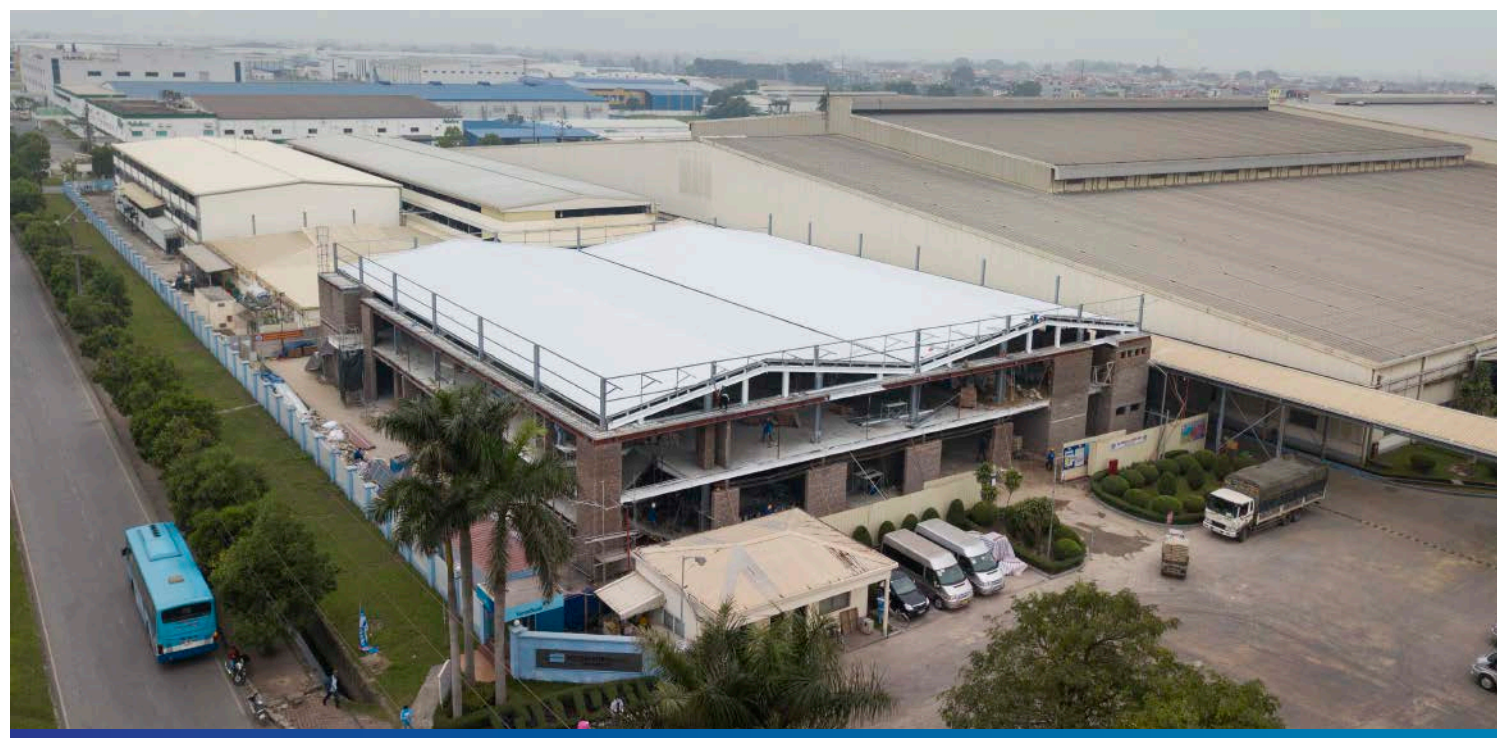
SHINKO PIPE PROJECT

Owner: Shinko Pipe corporation Viet Nam
Location: Dong van III IZ- Ha Nam Province.



IYAMA SEIKI VIET NAM FACTORY

Owner: Iiyama Seiki Viet Nam Co.,Ltd
Location: Nam Cau Kien IZ, Hai Phong Province.



NITORI FURNITURE VIET NAM FACTORY

Owner: Nitori Furniture Viet Nam Jsc
Location: Quang Minh IZ, Ha Noi City.



NAGOYA VIET NAM FACTORY

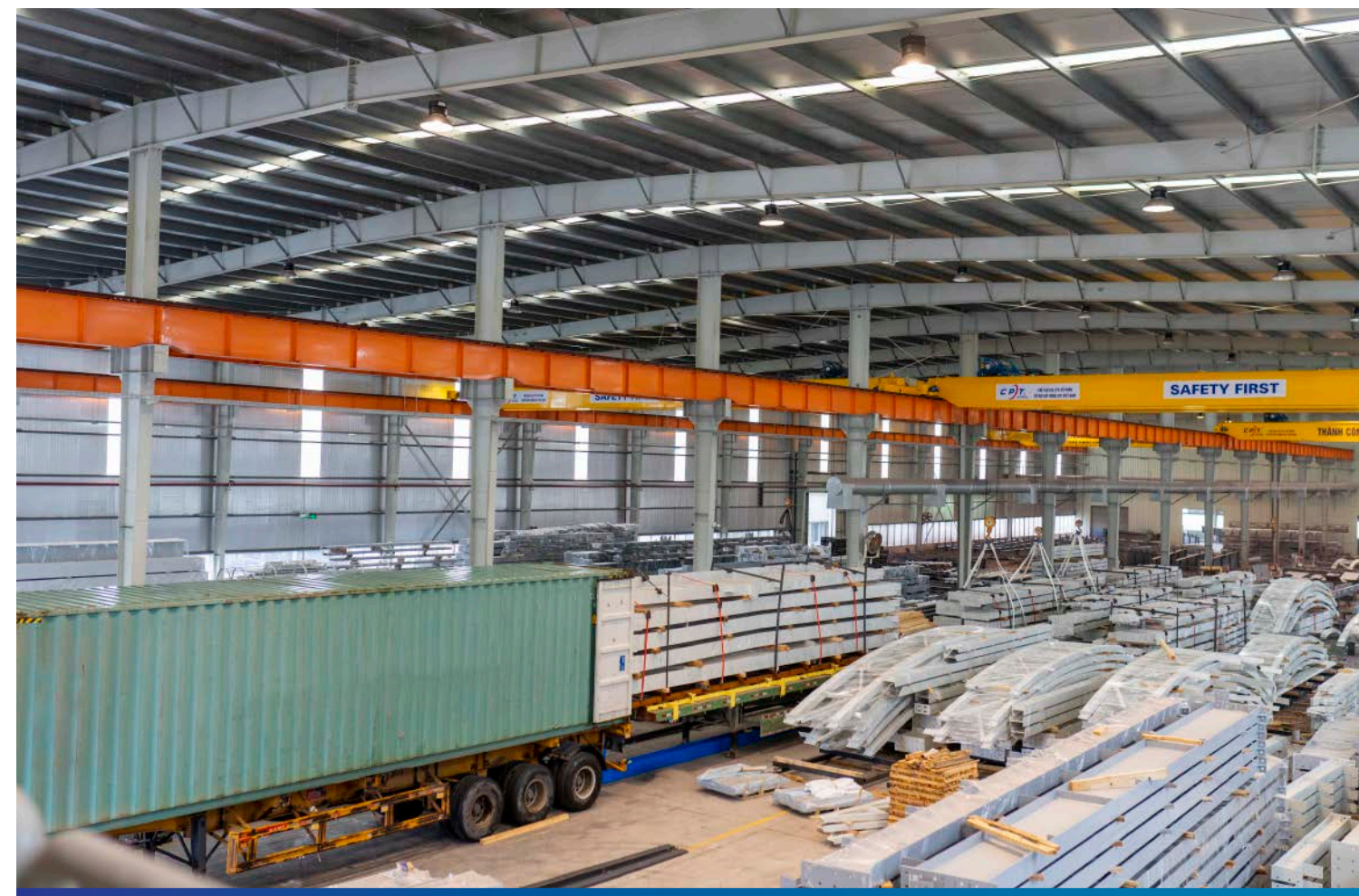
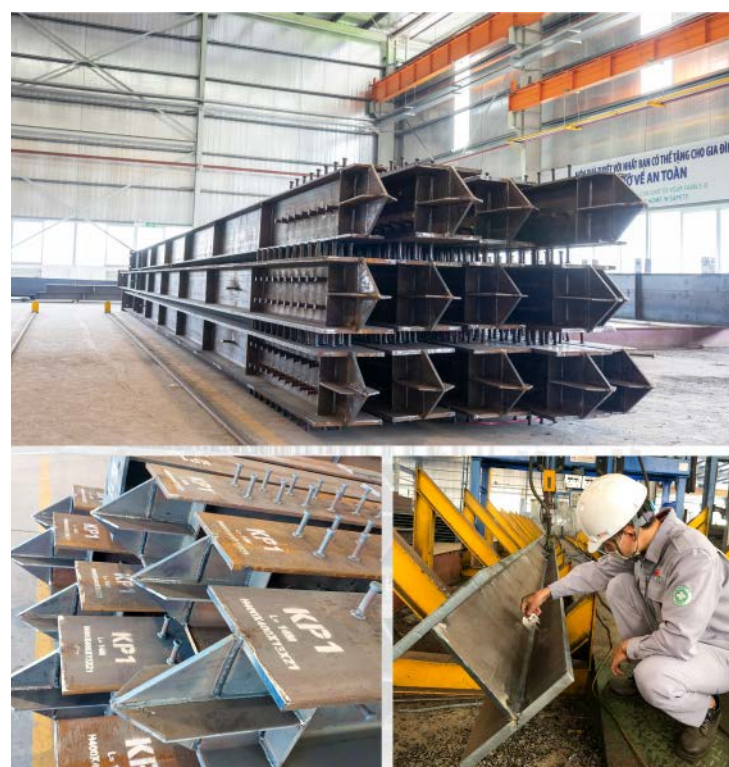
Owner: Nagoya Việt Nam Industry Company
Location: Nam Cam IZ, Nghe An Province.



KINGPOST



CPTSTEEL



EXPORT PRODUCTS



KẾT CẤU THÉP CPTSTEEL KẾT CẤU THÉP CPTSTEEL KẾT CẤU THÉP CPTSTEEL



KẾT CẤU THÉP CPTSTEEL KẾT CẤU THÉP CPTSTEEL KẾT CẤU THÉP CPTSTEEL

Joint development
Joint success





CPT GROUP JOINT STOCK COMPANY

 cptsteel.com

Ha Noi Office: No 1/78 Duy Tan Street, Hanoi City, VietNam
Ho Chi Minh Office: No 56 Yen The, HoChiMinh City, VietNam

Factory 1: Hiep Hoa
Industrial Cluster,
BacGiang Province

Factory 2: Thang town,
Hiep Hoa District,
BacGiang Province

Factory 3: Thanhvan
Industrial Cluster,
BacGiang Province